



IMclean DAD4

MANUAL



CONTENTS

- Contents of Box 1
- Installing DAD4 Drivers 2
- Updating IMclean DAD4 Drivers 4
- Connect IMclean DAD4 with Bluetooth 6
- Performing a Self-Test 8
- DAD4 Indicator Lights 12
- IMclean Cables 13
- Initial IMclean Setup 13
- Selecting Your IMclean Gen4 in California BAR OIS 13
- Uninstalling Your DAD 13
- Support and Warranty Information 14



IMCLEAN GEN4 CONTENTS OF BOX



Mclean OBD2 Cable 9'
DAD-CBL-OBD-01LP PGM



IMclean Manual

IMclean External Charger
DAD-CBL-EXTCHRG



IMCLEANGEN4-BT-03 UNIT



Bluetooth
Dongle
BAR-USB-ADPT-02



IMclean USB Cable 6'
DAD-CBL-USB-06-VER2

IMclean Self-Test Cable
9' DAD-CBL-J1962F-01



IMclean Cigarette
Lighter Cable 15'
DAD-CBL-ADPT01-15

- 1 IMcleanGEN4-BT-03 unit
- 1 Bluetooth Dongle
- 1 IMclean OBD2 Cable 9'
- 1 IMcleanself-Test Cable

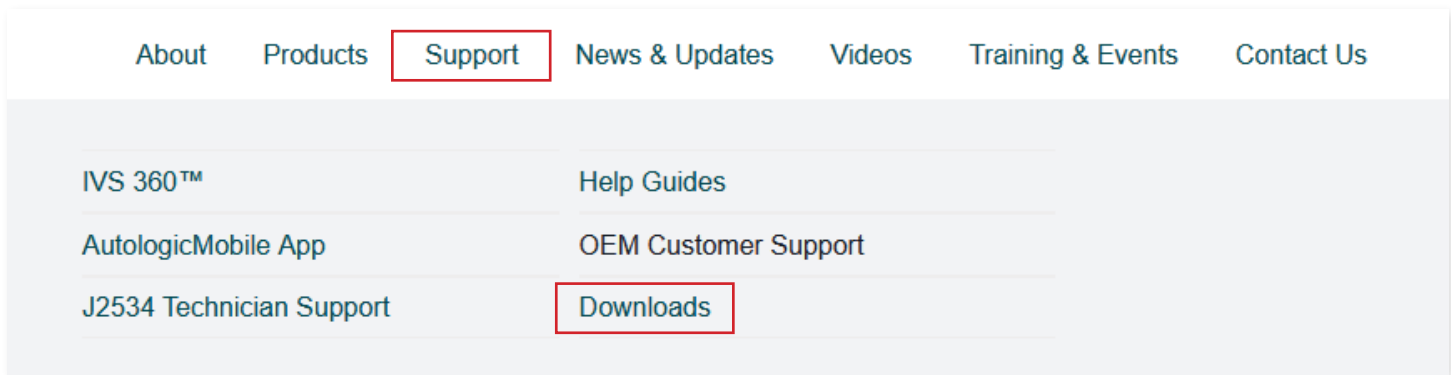
- 1 IMclean External Charger
- 1 IMclean Cigarette Lighter Cable 15'
- 1 IMclean USB Cable 6'
- 1 IMcleanGEN4-BT-03 Manual

INSTALLING DAD4 DRIVERS

1. Navigate to www.opusivs.com



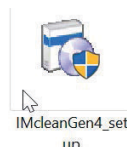
2. Choose Support > Downloads



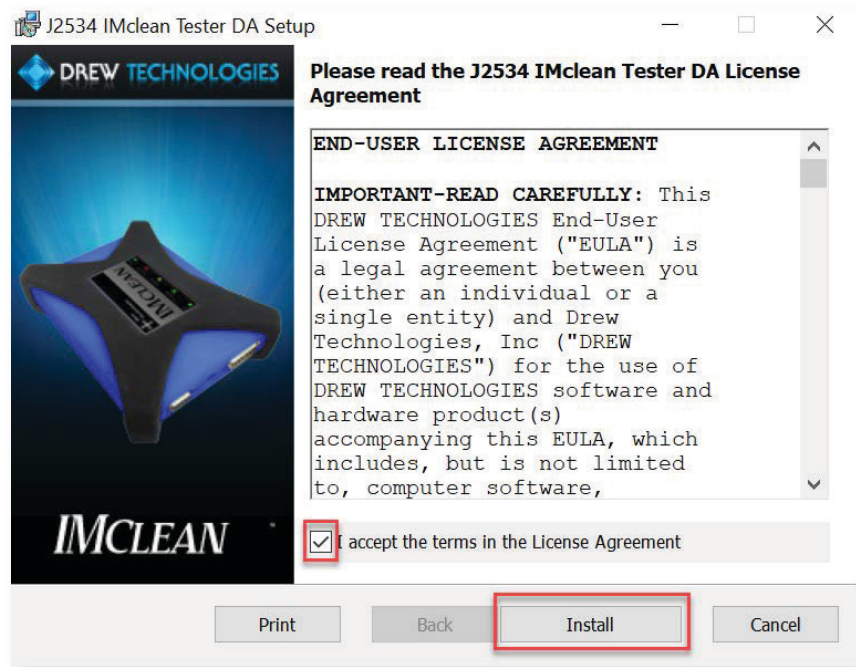
3. Scroll to IMclean® DAD4.



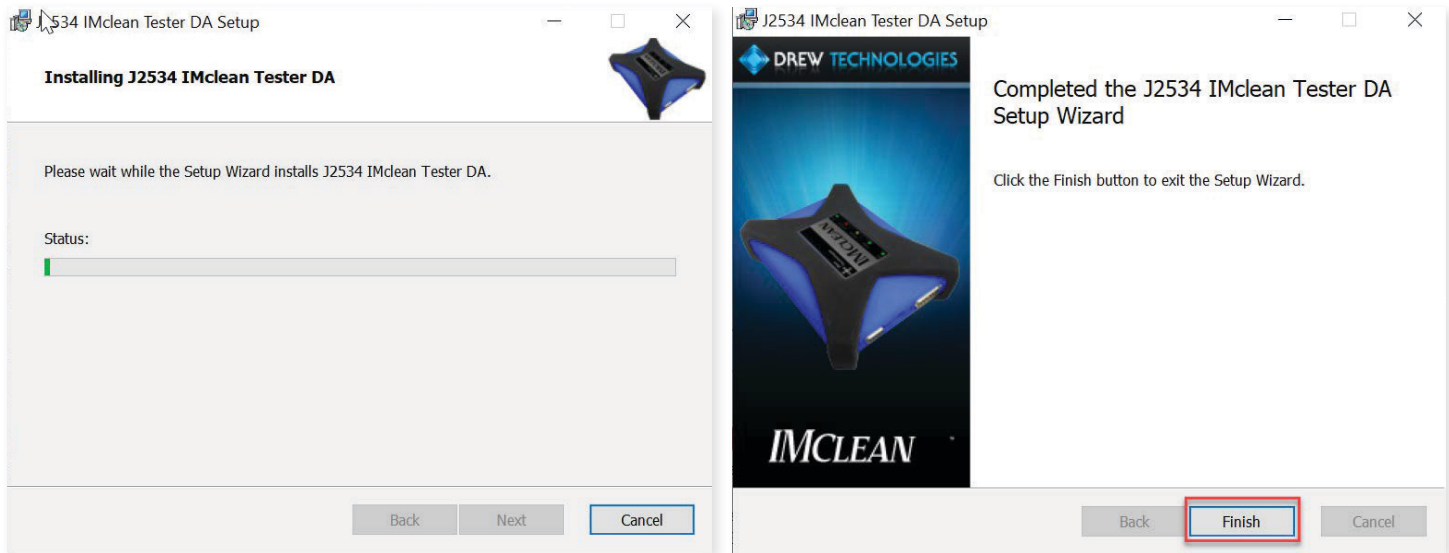
4. Click on the DOWNLOAD link.
5. Open Downloads folder.
6. Double-click the downloaded "IMcleanGen4_setup" to run.



7. Read the End-User License Agreement and check the "I accept..." box. Click Install.



8. Follow on-screen prompts to complete installation.



9. Click Finish.
10. Connect the IMclean to the USB cable and plug the USB cable into your PC.

UPDATING IMCLEAN DAD4 DRIVERS

1. Open this folder > C:\Program Files (x86) > Drew Technologies, Inc > IM_DA > IMCleanUpdater

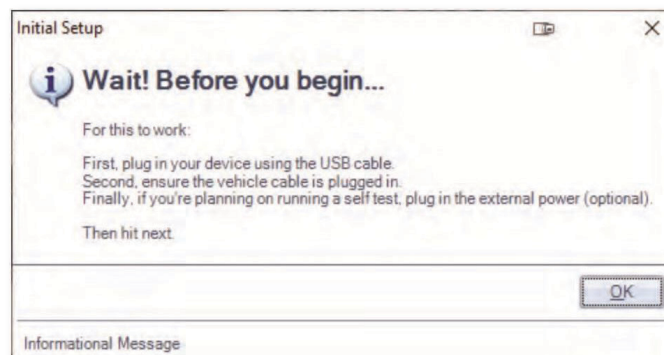
Windows (C:) > Program Files (x86) > Drew Technologies, Inc > IM_DA

Name	Date modified	Type	Size
DevComponents.DotNetBar2.dll	9/14/2018 10:43 AM	Application exten...	5,580 KB
DT.DAD.dll	8/17/2021 5:02 PM	Application exten...	88 KB
IIMCleanDriver.dll	8/17/2021 5:02 PM	Application exten...	22 KB
IMCleanDriver.dll	8/17/2021 5:02 PM	Application exten...	3,740 KB
IMCleanMsngr.exe	8/17/2021 5:02 PM	Application	510 KB
IMCleanUpdater.exe	8/17/2021 5:02 PM	Application	1,136 KB
IMCleanUpdater.XmlSerializers.dll	8/17/2021 2:26 PM	Application exten...	21 KB
tv_client.exe	10/25/2018 11:47 AM	Application	4,359 KB

2. Double-click IMcleanUpdater to run.



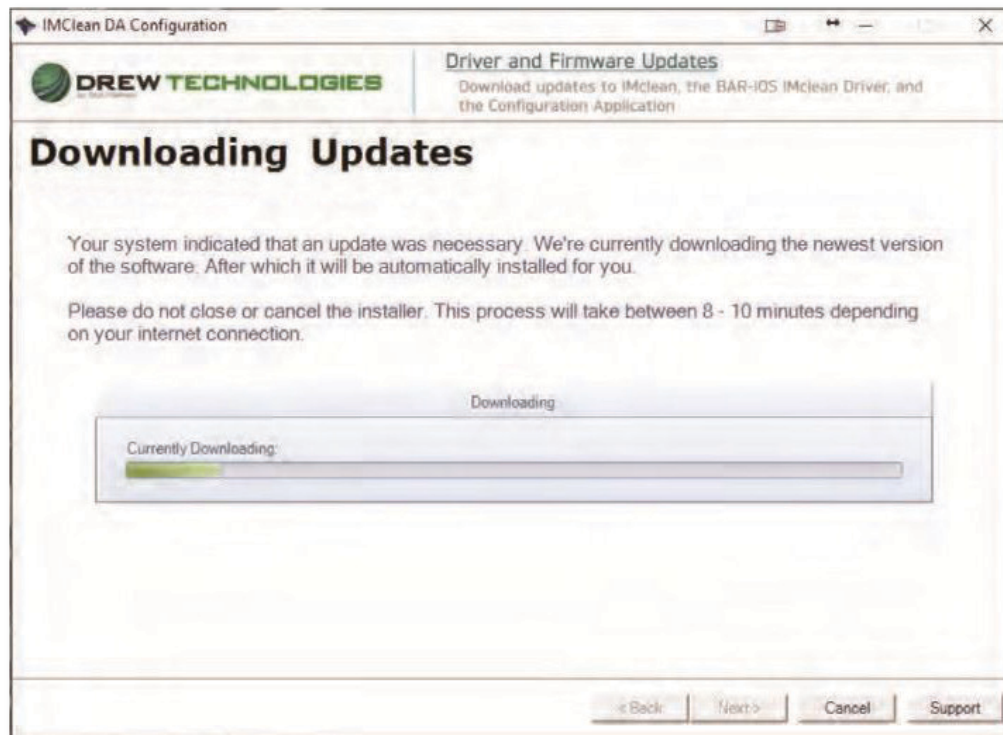
3. Confirm that the USB cable and vehicle cable are plugged into the IMclean DAD4. Click OK



4. Click Update Now



5. Follow on-screen directions.



6. Click OK.

CONNECT IMCLEAN DAD4 WITH BLUETOOTH

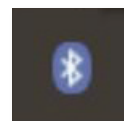
PAIRING CODE/PIN IS: 2534

Note: the USB cable can not be connected at all if you wish to use Bluetooth

- 1. Insert the Bluetooth dongle into a USB port on your PC (if your PC does not have built-in Bluetooth).**

Note: if your computer already has an internal Bluetooth antenna, do not use the USB Bluetooth dongle supplied with the kit. If you plug in the dongle redundantly, it can cause communication problems.

- 2. Right-click the Bluetooth icon in the system tray in the lower right corner of your screen.**

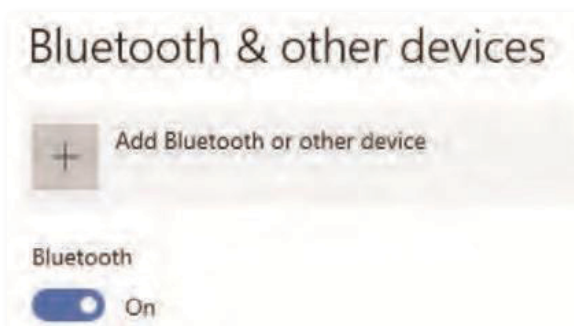


- 3. Click “Add a Bluetooth Device”**

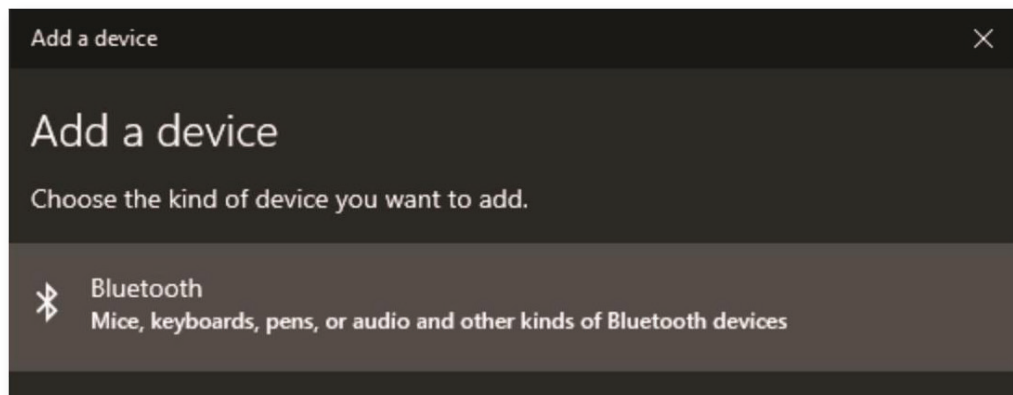


Note: the device must be connected to 12v external power in order to enter pairing mode, using the IMclean External Charger or the IMclean Cigarette Lighter Cable.

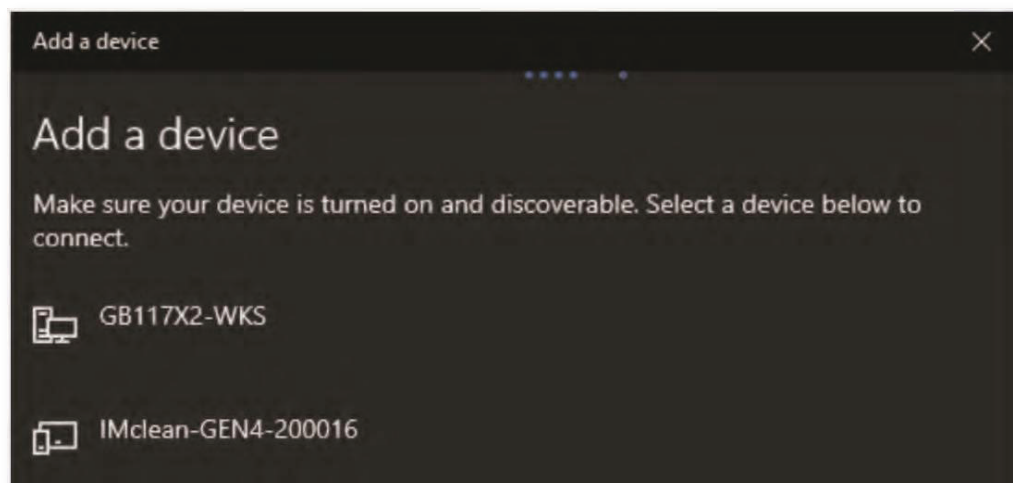
- 4. Click “Add a Bluetooth or other Device”**



- 5. Click on Bluetooth**



6. Wait until you see “IMclean-GEN4-#####” and click on it.



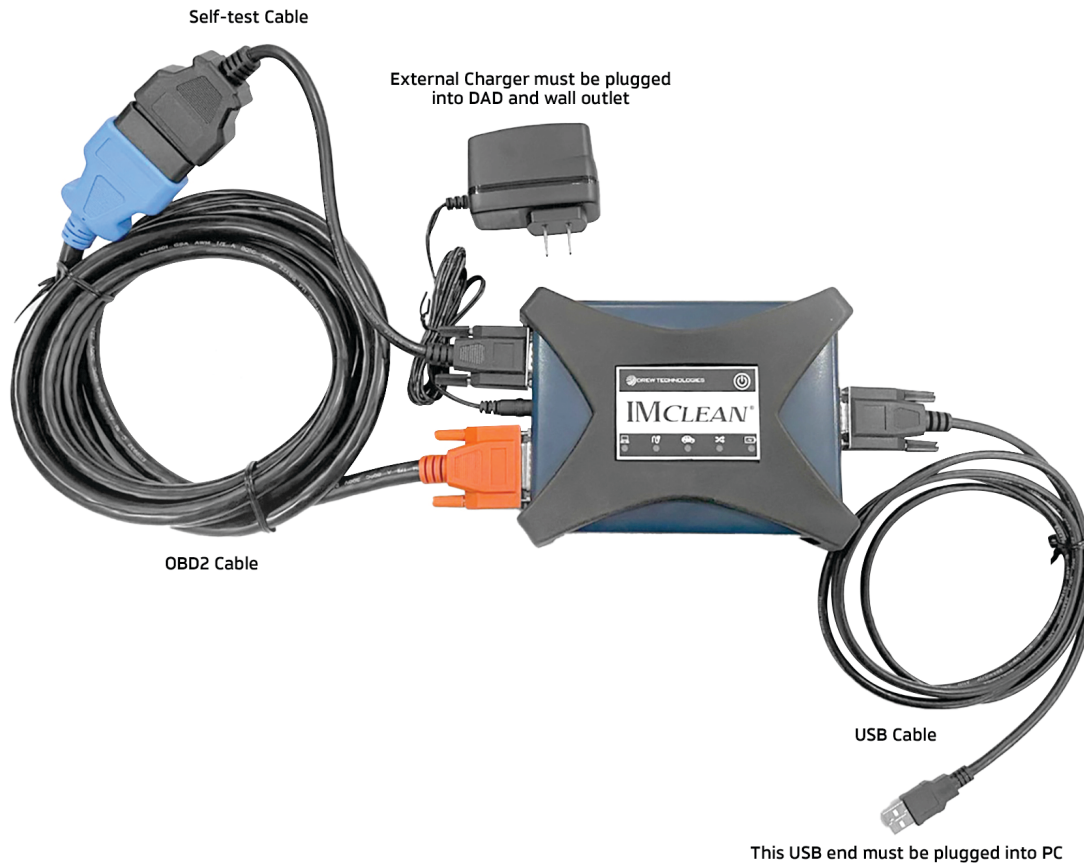
7. You may be prompted to enter a pairing code. The code is 2534.

You may only have one (1) IMclean BT paired with your PC at any time. The IMclean driver will inform you if you have multiple devices paired to your PC and will stop functioning.

Note: if your computer already has an internal Bluetooth antenna, do not use the USB Bluetooth dongle supplied with the kit. If you plug in the dongle redundantly, it can cause communication problems.

PERFORMING A SELF-TEST

1. Confirm that the USB cable and vehicle cable are plugged into the IMclean DAD4. Click OK.



2. Open this folder > C:\Program Files (x86) > Drew Technologies, Inc > IM_DA > IMCleanUpdater

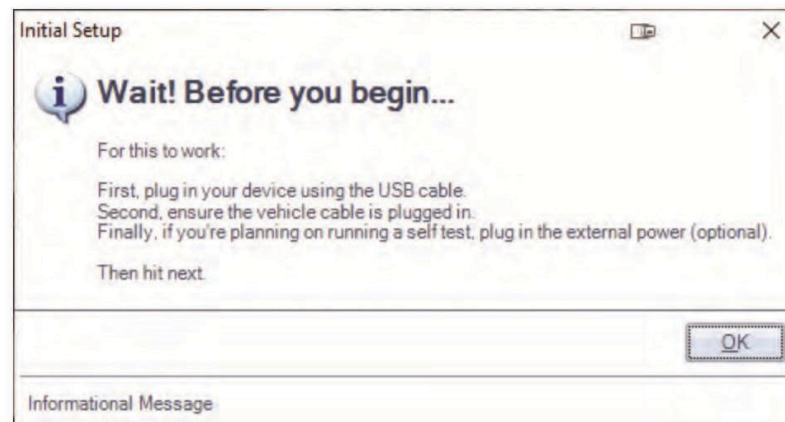
Windows (C:) > Program Files (x86) > Drew Technologies, Inc > IM_DA

Name	Date modified	Type	Size
DevComponents.DotNetBar2.dll	9/14/2018 10:43 AM	Application exten...	5,580 KB
DT.DAD.dll	8/17/2021 5:02 PM	Application exten...	88 KB
IIMCleanDriver.dll	8/17/2021 5:02 PM	Application exten...	22 KB
IMCleanDriver.dll	8/17/2021 5:02 PM	Application exten...	3,740 KB
IMCleanMsng.exe	8/17/2021 5:02 PM	Application	510 KB
IMCleanUpdater.exe	8/17/2021 5:02 PM	Application	1,136 KB
IMCleanUpdater.XmlSerializers.dll	8/17/2021 2:26 PM	Application exten...	21 KB
tv_client.exe	10/25/2018 11:47 AM	Application	4,359 KB

3. Click Next.



4. Click OK.



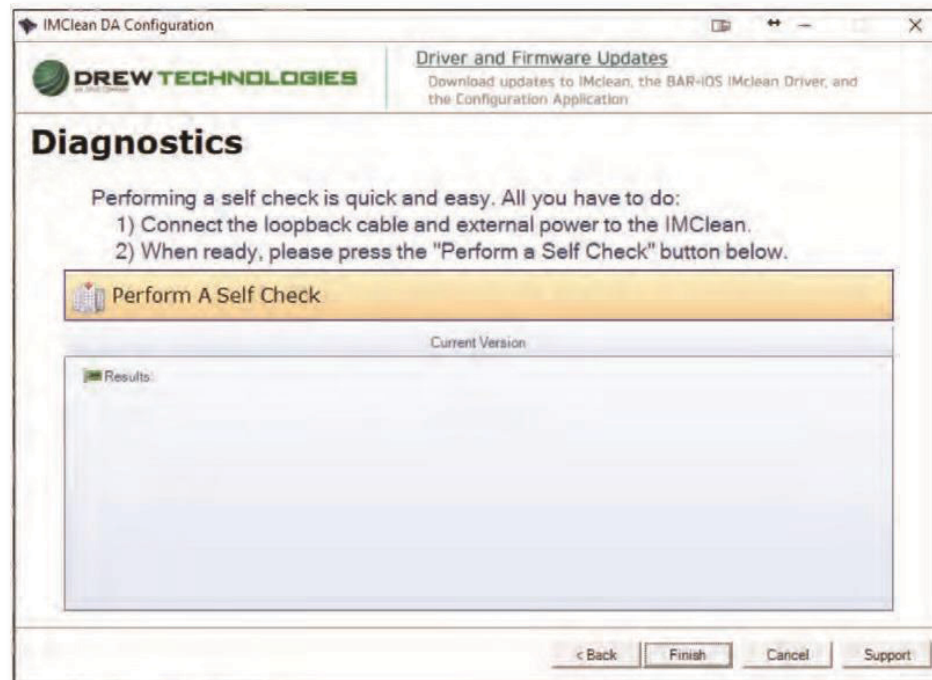
5. Click Next.



6. Click "Run a Self Check".

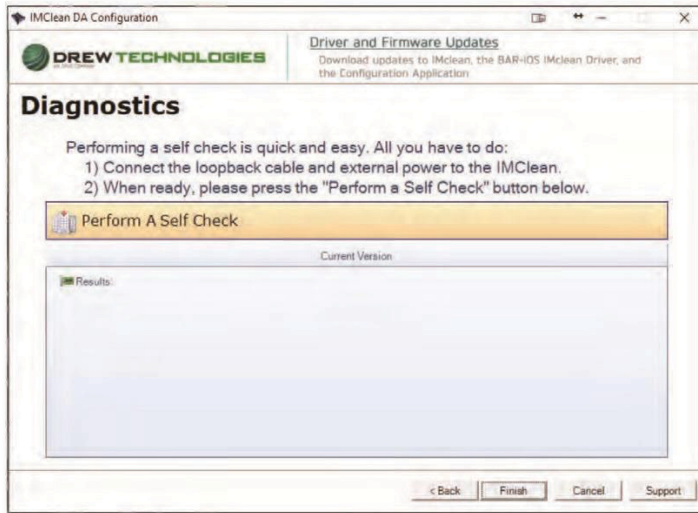


7. Click "Perform a Self Check".

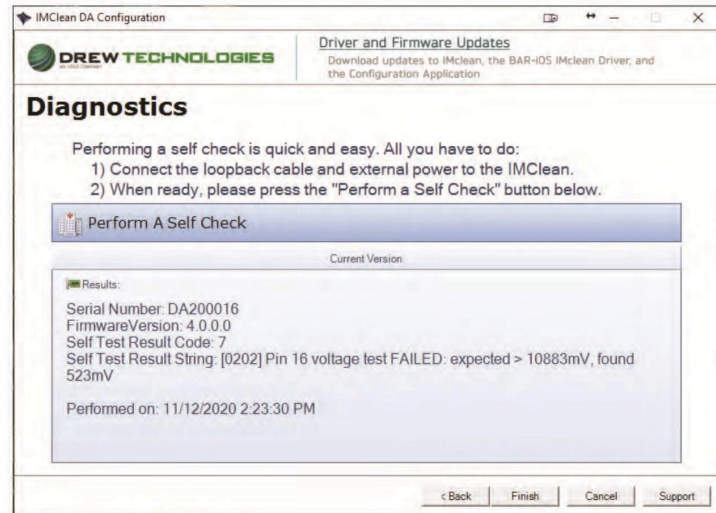


- 8.** If the DAD does not pass the test, leave this screen up when you contact Technical Support as it will help them diagnose the issue you are having.

a. Pass Example:



b. Fail Example:



IMCLEAN DAD ERROR CODE STRING INFORMATION:

Code 0: Passed the test

Code 7 or 8:

- **No devices detected.** Please connect one and retry.
 - Need to plug in IMClean USB cable; repair Bluetooth.
- **Firmware Error e7: efailed 'OpenDevice: Cable not connected'**
 - Need to plug in the proprietary IMClean OBD2 cable
- **[0201] No +12V test voltage available: Expected > 8000mV, found #v**
 - Need to plug in external power, using the the IMClean External Charger or IMClean Cigarette Lighter Cable
- **[0202] Pin 16 voltage test FAILED: expected > 11040mV, found ##LESS##**
 - Need to plug in IMClean Self-Test Cable
- **[0301] Pin 4 ground test FAILED: expected 2650mV OC voltage, found #m**
 - Generally this indicates hardware damage.
 - Sometimes swapping 12v sources can resolve this.
- **[0302] Pin 5 ground test FAILED: expected 2650mV OC voltage, found #m**
 - Generally this indicates hardware damage.
 - Sometimes swapping 12v sources can resolve this.
- **[0905] J1850PWM Remote Static Test: Remote shows deasserted while local TX asserted**
 - Generally this indicates hardware damage.
- **[1002] K-Line Static Test: Idle state voltage too low: Expected > 10370mV, Found 160mV**
 - Generally this indicates hardware damage.

DAD4 INDICATOR LIGHTS



PC	CABLE	VEHICLE	PROTOCOL	BATTERY LED
<p>Slower Green Flash = USB OK</p> <p>Fast Green Flash = Pairing Mode</p> <p>Solid Green = Connected</p> <p>Blue = Bluetooth OK</p> <p>Red = No drivers installed</p>	<p>Green = OK</p> <p>Red = no cable connected, or improper cable connected</p>	<p>Green = vehicle connected</p> <p>No indication = voltage less than 8V on OBD port</p>	<p>Green flashing = communicating with vehicle</p> <p>Green solid = connected to vehicle</p>	<p>Green = Charged – Not charging anymore</p> <p>Red = Charging</p>

AUXILIARY POWER CABLE USAGE:

There are two types of auxiliary power cables:

- **External Battery Charger** – used to charge the battery or perform a **self-test**. If the IMclean shuts down after removed from DLC plug into charger.
- **Cigarette Lighter Power Adapter** – used when there is no power at the DLC for performing a vehicle test or a **self-test**

Either of the cables can be plugged into the barrel port between the vehicle cable and self-test cable ports.

IMCLEAN CABLES

The cables provided with the IMclean are proprietary. Attempting to use the IMclean with cables not produced by Drew Technologies will cause the IMclean to not communicate with vehicles or the PC.

Using a NON-DrewTech vehicle cable will cause the cable light to be red on the IMclean.

Cable extensions for either the USB or vehicle cable are not approved and are a modification to the certified hardware package. OBD extenders may cause CAN communication failures. Using USB extenders may cause data to be lost when going over the USB maximum distance.

INITIAL IMCLEAN SETUP

When getting started with your IMclean, we recommend using the wired connection to the PC. You **MUST** have the red vehicle cable connected to the IMclean, or else the IMclean will **NOT** communicate with the PC and the cable LED will be red.

SELECTING YOUR IMCLEAN GEN4 IN CALIFORNIA BAR OIS

Open OIS from the Desktop icon. Click File > Self Diagnostics. Scroll to the bottom of the page. Click Configure. Select "DrewTechnologiesSeriesDA" from the dropdown menu. Leave the DAD port blank. Click Continue.

UNINSTALLING YOUR DAD

If you wish to remove the IMclean device from your computer permanently, you can remove all software by using the uninstall feature from the Windows control panel.

SUPPORT AND WARRANTY INFORMATION

BAR-OIS

- BAR Help Desk: (866) 860-8509
- BAR Home Page: <https://www.bar.ca.gov/Industry/BAR-OIS>
- BAR-OIS Software Download (Scroll to bottom):
<https://start.calbarois.com/calvis-registration/>
- BAR Contact Page: https://www.bar.ca.gov/Contact_Us

Opus IVS

- Opus IVS Downloads page: <https://www.opusivs.com/support/downloads>
- (877) 888-2534 Option (2 → 3)
- support@opusivs.com

Opus Inspection

- ESP Website: https://www.esp-global.com/en_US/IM/California
- ESP Customer Support: (800) 895-4377
- espinfo@esph.com

Warranty information

- IMclean-DAD comes with a 3 year warranty, beginning on date of purchase
- Adapters/Cables have a (90) day warranty. In cases where customer receives a defective cable, we will credit them upon confirming the device is defective.
- When we **REPAIR** a device, there is a (90) day warranty.